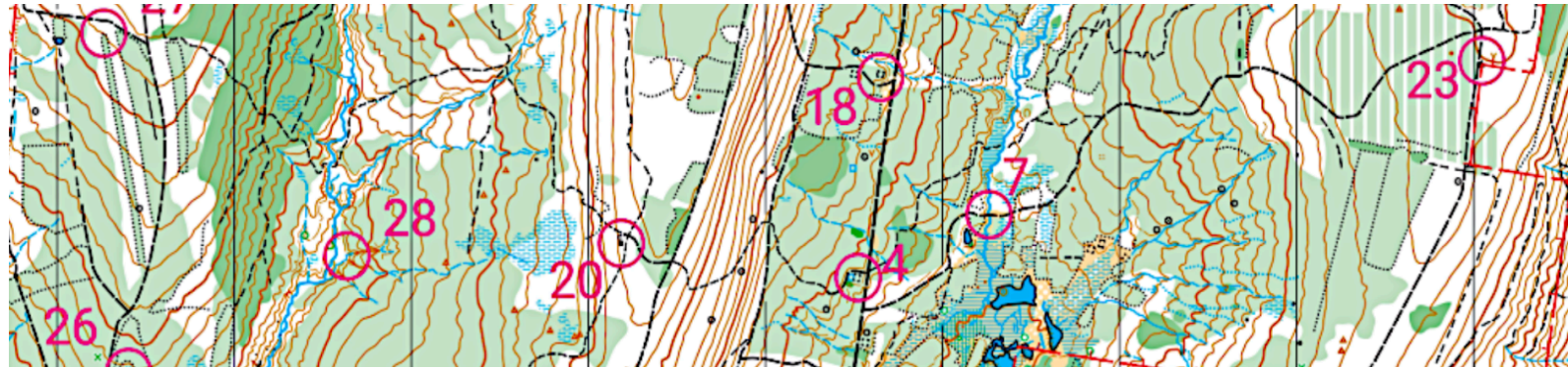




# Central New York Orienteering Scout-O Newsletter

Late Summer, 2025



## What is the Scout-O?

The Scout-O at Highland Forest is an orienteering event for scouts and other youth groups which is hosted by the Central New York Orienteering club each November.

For those that have never tried orienteering, it is a sport which uses a map and compass to navigate from point to point through unfamiliar terrain. Participants are given an orienteering map which they use to find control points.

We offer instruction to build your confidence with a map and compass. For more information about the sport of orienteering, visit [OrienteeringUSA](http://OrienteeringUSA)

## Announcing the 32nd Annual Scout-O

Come join us for a fun event in the woods! **For the 32nd year in a row**, the Central New York Orienteering Club is offering an opportunity for Scouts and other youth groups to learn and practice the art of using a map and compass. Our popular two week format centers around the main event on November 8-9 with guided hikes on the 8th and a patrol competition on the 9th. For those wanting more flexibility, guided hikes will be available for beginners by appointment, and self-serve map hikes will be available for experienced groups, all during the two weeks of November 1-15.

**Guided hikes:** CNYO offers private instruction for youth groups and their leaders on two basic courses. These assisted hikes are available by appointment from 8:30 AM to 1:30 PM on November 8th or by appointment on other dates starting November 1st. Meeting times are prearranged, so choose a time slot when you register.

**Self-serve hikes:** We offer three additional courses for groups to hike on their own starting November 1st. Groups may start between 8:30 AM and 1:30 PM and must be off the trail by 4 PM. Adult leaders must handle their own timing and monitoring. You must notify us of your plan.

### CNYO members will teach:

- map orienting
- map symbols
- terrain features
- catching and safety features
- route choice
- basic compass use (cont.)



# Boy Scout Rank Requirements

The Scout-O at Highland Forest is a perfect opportunity for Boy Scouts to complete any number of rank requirements needed for advancement. Nature, camping, hiking, and leadership are just a few of the areas that can be covered by members of a troop at the event. In particular, requirement 4a of the First Class requirements reads: "Using a map and compass, complete an orienteering course that covers at least one mile and requires measuring the height and/or width of designated items (tree, tower, canyon, ditch, etc.)." Ask us at check-in about our measurement tree and complete this requirement after hiking our courses at the Scout-O!



# Girl Scout Badges

There are plenty of requirements for Girl Scouts to complete as well. Check off requirements for Camping, Trail Adventure, or any of the Outdoor Explorer badges at any level.



## Announcing the 32nd Annual Scout-O (cont.)

**Cost:** \$5.00 per scout. Event patches are available for the first 250 registrants. Maps are free if you print your own from our website after registering, or \$2.00 per map if you ask us to print them for you with 10-day advanced notice. Five different maps are available (2 beginner, 3 intermediate). Please print maps in color.

**Camping:** We will be offering primitive tent camping spots at the Cedars group camping area on Friday the 7th and Saturday the 8th (\$20 camping fee per troop).

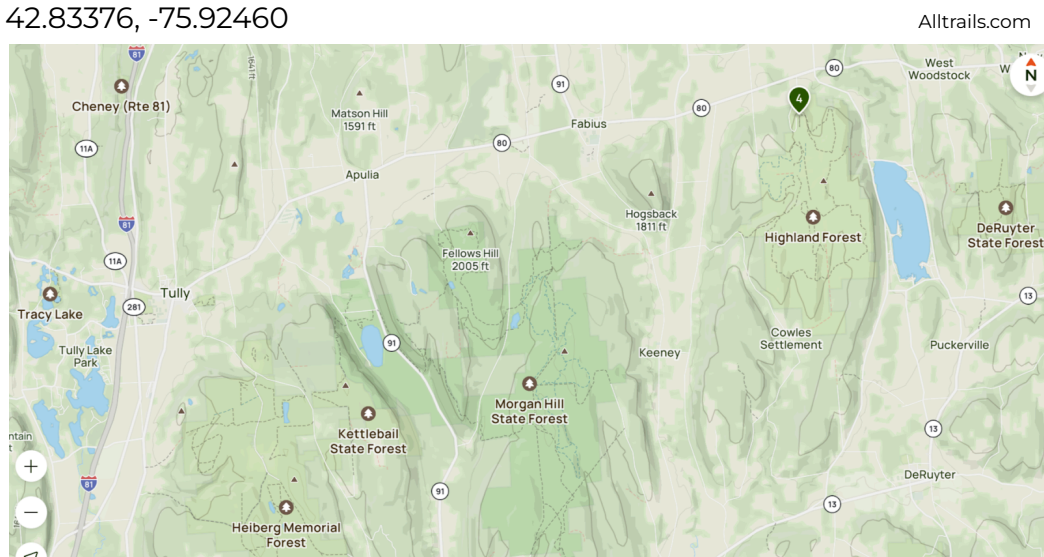
**Register:** You must register as a troop or youth group. Parents and leaders need not register unless they want a patch, but all participants must complete a waiver. Registration information is available at [cnyorienteering.net/scout-o/](http://cnyorienteering.net/scout-o/). Registration opens September 15th, 2025.

**Directions:** Take I-81 to the Tully exit. Follow Rt. 80 east for 10 miles, passing through Fabius, to the park entrance on the right. Follow the orange-and-white orienteering signs to the meet headquarters. The 2025 event is based at the pavilion below Pines Camp.

**Volunteer:** Opportunities are available for older, experienced scouts to lead map hikes.

**Questions?** Contact Stacy Pendell (315-729-2894, [sjp16@cornell.edu](mailto:sjp16@cornell.edu)).

Scout-O at Highland Forest County Park  
1254 Highland Park Rd, Fabius, NY 13063  
42.83376, -75.92460



[cnyorienteering.net](http://cnyorienteering.net)

An OrienteeringUSA member club



## Contacts ...

Is your troop changing leadership this fall? Give us contact information for your new adult leaders so that we can keep you on our mailing list. Get timely updates on our November event so that your troop doesn't miss out on the fun!

Email our registrar at:  
[sjp16 @ cornell.edu](mailto:sjp16@cornell.edu)

## Calendar

September 27-28

Sportsmen's Days at  
Carpenter's Brook

October 18

Open House at Pratt's Falls

November 1-2

Opening weekend Scout-O

November 8-9

Scout-O main event

November 9

Turkey-O at Highland Forest

November 15

Last day to hike at Scout-O

Check our website for more  
information.

**See you in the woods!**

## Get Some Practice!

CNYO has a 25-control permanent orienteering course at Pratt's Falls near Pompey, NY. This beautiful Onondaga County park offers scouts, youth groups, and the general public the opportunity to practice map and compass skills amidst scenic waterfalls and verdant woods. It's a great training venue for scouts in anticipation of our annual Scout-O event at Highland Forest. The course is free and open to the public during regular park hours.

**Skill levels:** The course includes 25 control points sorted into three levels of difficulty.

**Self-serve:** You can download the maps, clue sheet, and punch card from the Pratt's Falls' page on our website. Bring your friends and hit the trail! Prior to November 1st, If you would like a CNYO instructor to meet you at the park for instruction, contact us at [sjp16 @ cornell.edu](mailto:sjp16@cornell.edu).

**Open Houses:** In 2025, we will be at the park on October 18th from 11 AM - 1 PM. We'll be handing out maps and giving instruction. Scouts and their families are most welcome! Contact us in advance if you plan to bring a group so that we will be prepared for you.

**Questions?** Contact Nancy Gaus ([nggaus123 @ gmail.com](mailto:nggaus123@gmail.com))  
[cnyorienteering.net/pratts-falls/](http://cnyorienteering.net/pratts-falls/)

Pratt's Falls County Park  
7671 Pratts Falls Rd, Manlius, NY 13104  
42.92727, -75.99473

©Matt Conheady, nyfalls.com



[cnyorienteering.net](http://cnyorienteering.net)

An OrienteeringUSA member club