

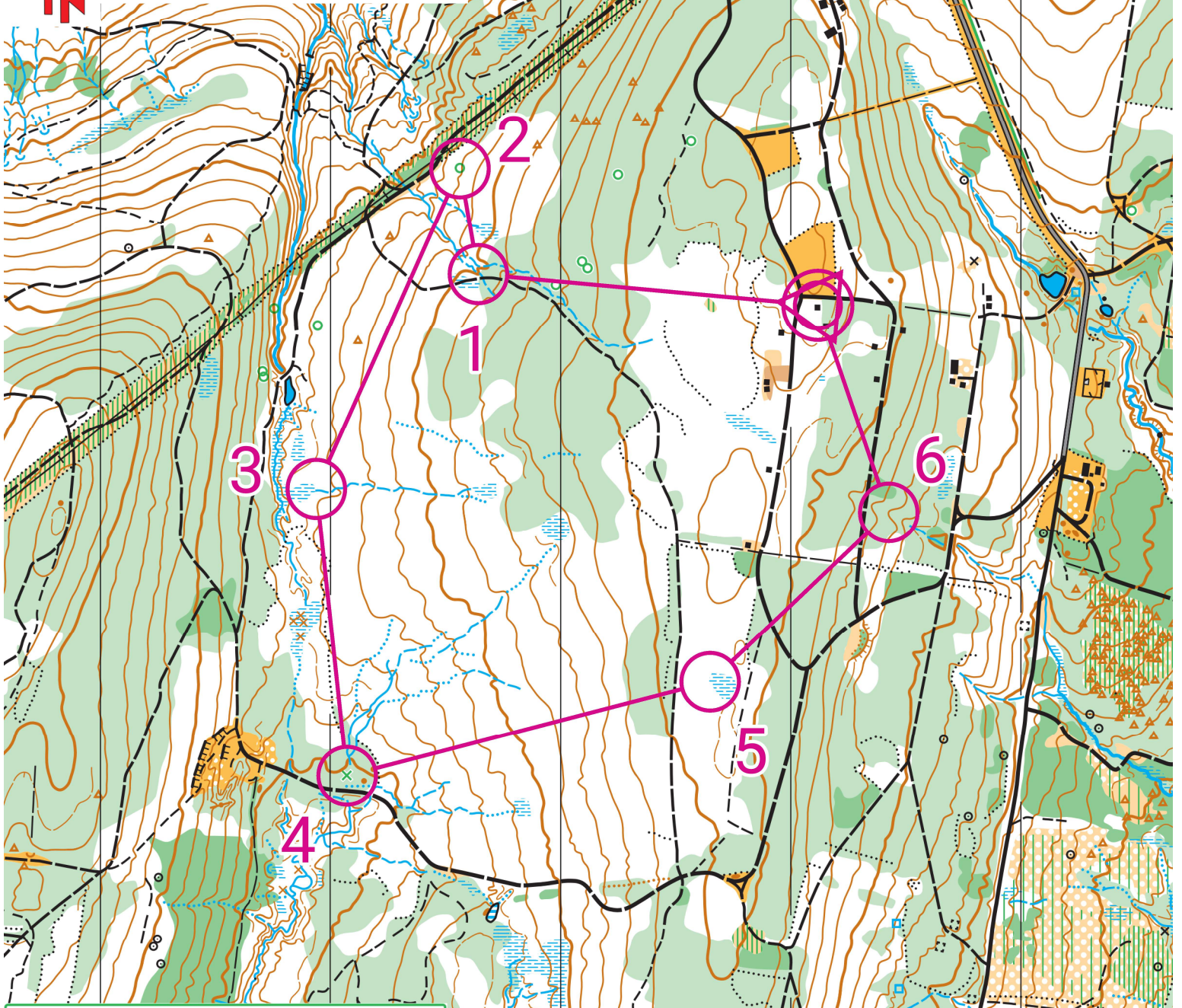


Scout-O Highland Forest

Experienced Self-Serve Hike #2
Scale 1:7500 Interval 5m



300 meter



	PAVED ROAD		WIDE STREAM
	SMALL ROAD		MINOR WATER CHANNEL
	VEHICLE TRACK		SEASONAL DITCH
	FOOTPATH		NARROW MARSH
	SMALL TRAIL		SPRING - WELL
	INDISTINCT or OLD TRAIL		UNCROSSABLE SWAMP
	PARK BOUNDARY		MARSH
	STONEWALL		SEASONAL WET LAND
	RUIINED FENCE		PONDS
	FENCES; HIGH - LOW		OPEN LANDS
	BUILDINGS		OPEN LAND w/ TREES
	RUIIN - SHELTERS		ROUGH MEADOWS
	POWERLINE		MEADOW w/ TREES
	ROCKPILE - STONY GROUND		FOREST: EASY MOVMENT
	MAN MADE OBJECTS		FOREST: SLOW RUN
	DISTINCT DECIDIOUS TREE		GROUND COVER: SLOW
	SINGLE CONIFER TREES		FOREST: DIFFICULT WALK
	CONTOURS (5m)		GROUND COVER: DIFFICULT
	FORM LINE - SLOPE		IMPASSABLE VEGETATION
	STEEP BANKS		DISTINCT VEG. CHANGE
	EARTH WALL		VAGUE VEG. TRANSITION
	EROSION GULLY		RECENT LOGGING
	DRY DITCH		

CNYO Scout-O 2024				
Experienced Self-Serve #2				
Orange	2.5 km			
				Start:
1	247			Top of reentrant
2	248			Lone tree
3	249			E end of marsh
4	250			Lone tree
5	251			W end of marsh
6	252			Reentrant
	280 m			Navigate 280 m to finish